

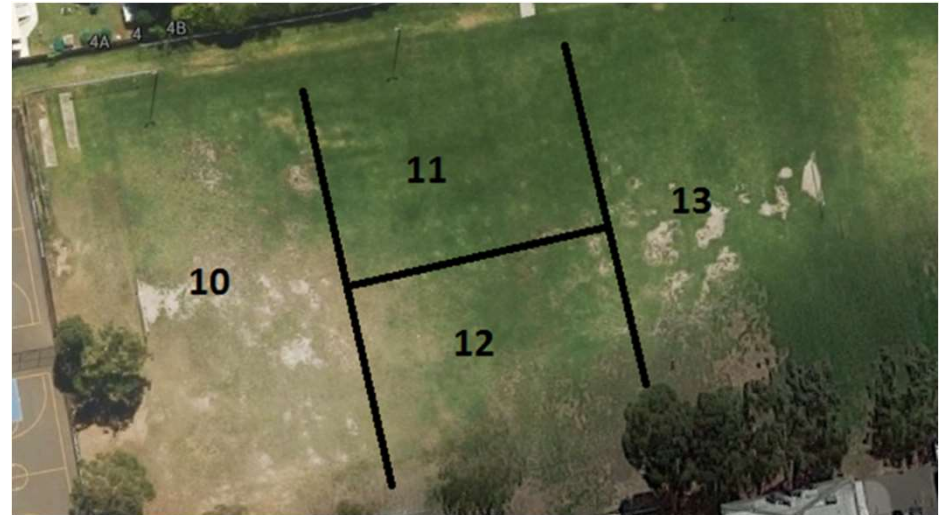
# Coaches & Managers Presentation



## BNFC Programme

Date	Event/Activity
3 January 2018	Registrations Open
10 February 2018	Grading - Comp (Toilets)
17 February 2018	Grading - Non Comp
26 February 2018	RTO meeting
5 March 2018	Training KO
10 March 2018	Trials (Sanctions)
17 March 2018	Trials (Sanctions)
24 March 2018	Trials (Sanctions)
26 March 2018	RTO meeting (AGM - TBC)
7 April 2018	Round 1
30 April 2018	RTO meeting
26 May 2018	Photos
28 May 2018	RTO meeting
25 June 2018	RTO meeting
23 July 2018	RTO meeting
11 August 2018	Round 18 (collect jerseys)
15 September 2018	Presentation Day 15 or 16

# Training Zones & Schedule

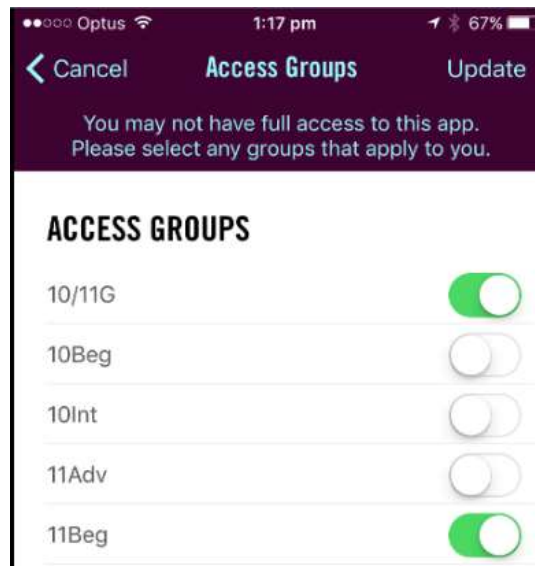
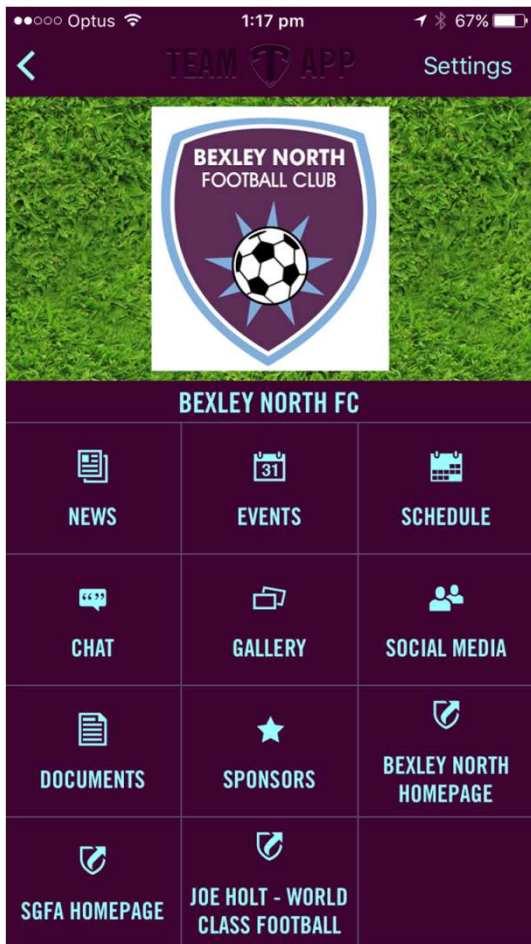


## WEDNESDAY

Zone	5 - 6pm	6 - 7pm	7 - 9pm	Notes
KAR 1		8INT1	17A	
KAR 2		8INT3	17A	
KAR 3		8INT4	14B2	
KAR 4		6BEG1/6BEG2	14GB2	U6 SHARE ZONE 4
KAR 5	6BEG3	9INT2	12B1	
KAR 6		6BEG4/6BEG6	12B2	U6 SHARE ZONE 6
KAR 7		10/11G2	10INT4	
KAR 8		7BEG5	11INT1	
KAR 9		9G1 & 9G2	11BEG1	
KHS 10				
KHS 11			14B1	
KHS 13		16GB1	16BG2	
BEX 14			AAW	

# TeamApp

- Access Groups
  - Coaches, Managers & RTOs
  - Squads
  - Goalkeeper
- News
- Chat
- Documents



# BNFC Website & TeamApp>Docs

Contains the most important documents

- RTO Handbook for comp and non-comp
- MiniRoos playing formats and rules
- FNSW Hot weather policy
- FNSW Lightning policy
- FFA Code of conduct

# BEXLEYNORTHFC.COM.AU > Club Files

## **BNFC Club Files**

- [Coaches and Managers Presentation](#)
- [Training Schedule](#)

## **BNFC Constitution**

- [BNFC Constitution](#)

## **St George Association Files**

- [RTO Handbook Non-Competition](#)
- [RTO Handbook Competition](#)
- [SGFA By Laws](#)
- [MiniRoos Rules and Playing Formats](#)
- [2017 Competition Match Sheets](#)
- [2017 Non-competition Match Sheets](#)

## **Football NSW**

- [Football NSW Hot Weather Policy](#)
- [FNSW Lightning Policy](#)
- [FFA Code of Conduct](#)

# Registered Team Officials (RTO)

- Must have an RTO card (WWCC from 2018)
- One RTO must be at each game
- One RTO is allowed inside the technical area
- RTO in the technical area must give his card to the referee before kick off
- Only enter the field after signal from referee (FINE ~\$500)

## Player ID Cards

- Check cards before kick off
- No card, no play
- If there's an issue with a player's ID, the player is permitted to play and the referee records an objection on match sheet

# Weather Information

- TeamApp notifications for fields closed and opened.
- For wet information call the relevant council, number on the website.
- Do not train on any venue when “Ground Closed”.
- Football NSW guidelines for hot weather is to cancel or postpone events above 32°C.
- Football NSW guidelines for lightning is the 30/30 rule.

# Ground Duties

## GAME DAY

- Setup and Pack up teams will be in the weekly news.
- First teams playing on the field are responsible for setting up 30mins before kick off, including roping off.
- Ensure that all chains are securely padlocked to the fence after moving the equipment.
- Last team playing must pack up & lockup (Toilets & Shed).
- Share the duties, which means get the parents involved.

## TRAINING NIGHTS

- First & Last to open and close gear shed & toilets.
- Ensure the padlocks are closed on the roller door latches.

Gear shed key safe code X X X X

- Put the keys straight back in the safe.









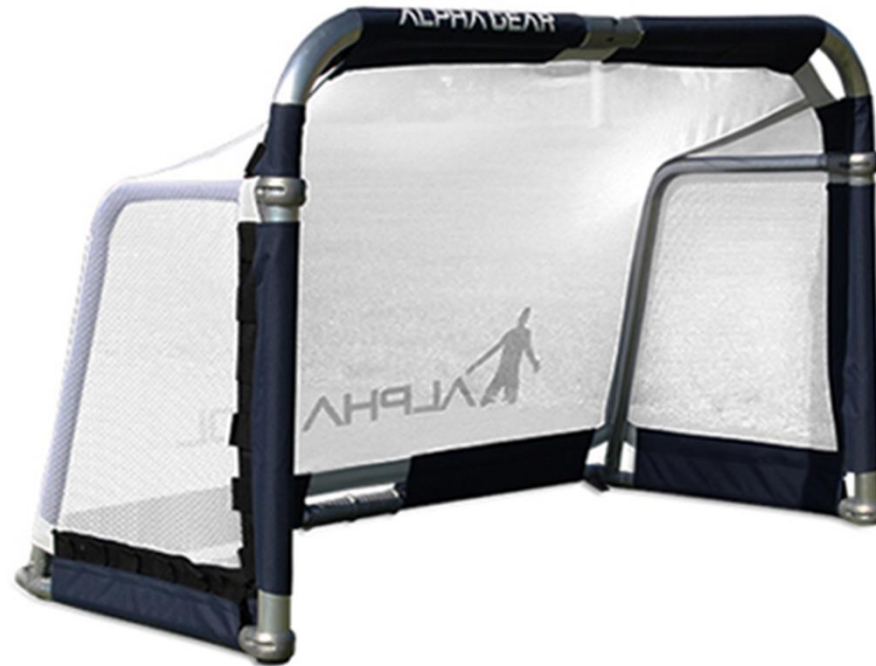




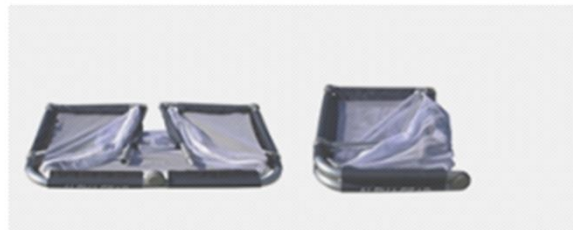
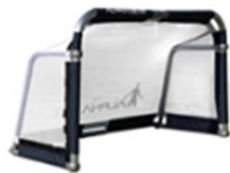




# SSF GOALS



ROLLOVER  
TO ZOOM



# Main Field & Midi Goals



Double marking the Main field with two Midi fields

Main field – White

Midi field - Black

# Goal Safety

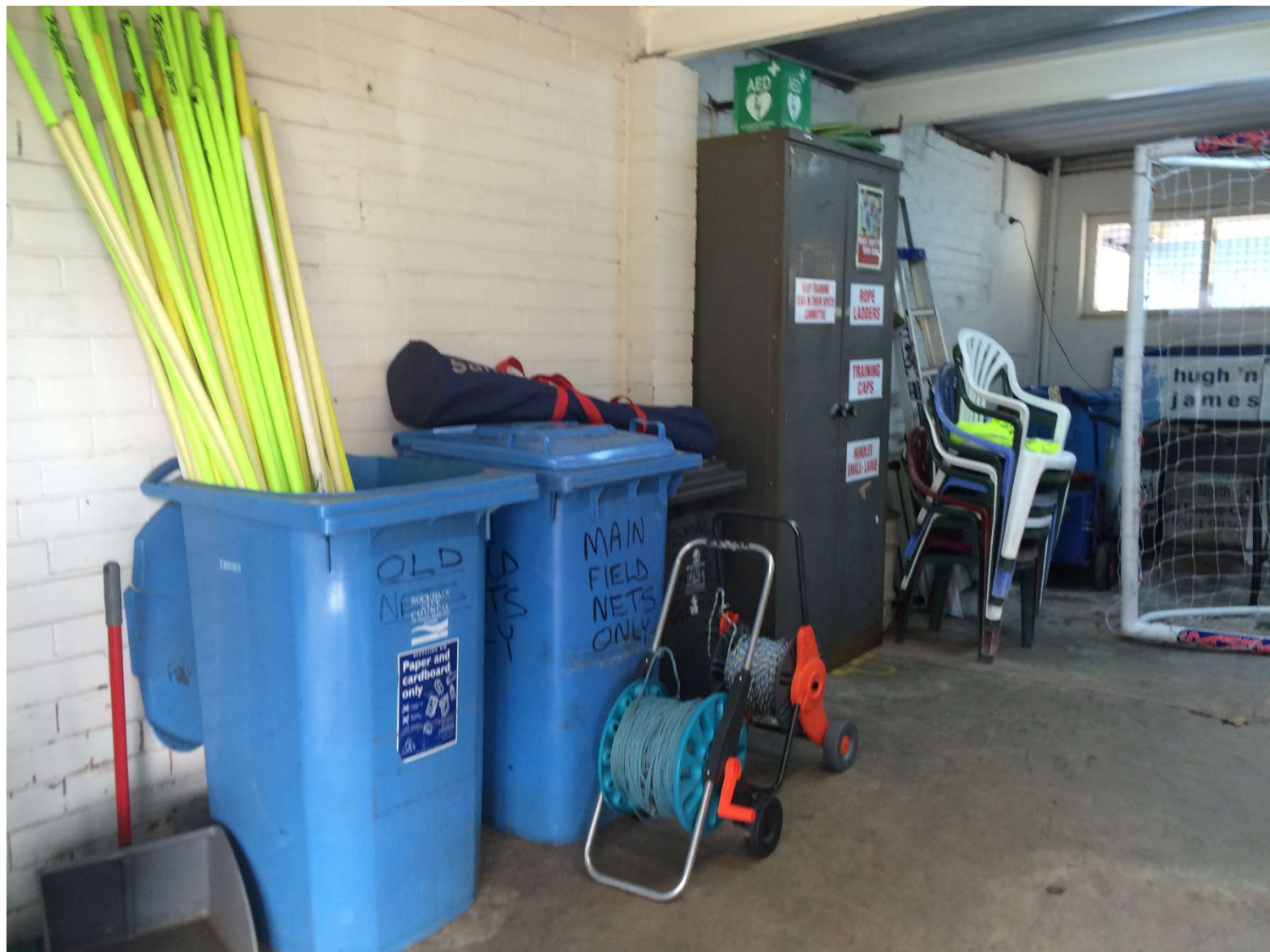
- Secure it.
  - Use stakes to secure the frame to the ground
- Test it.
  - Shake and push to ensure stability
- Respect it.
  - Never allow climbing, swinging or playing on goal posts



# KEEP CONTAINERS INSIDE ROPES









# Match Sheet

- Each team is responsible for their own match sheet
- Download from BNFC web site or TeamApp
- Prefill player information only
- **Do not make any changes** to the sheet
- Must be completed correctly
- SGFA \$25 fine for each sheet changed or incorrectly completed
- **Deliver to KAR canteen ASAP after the game.**

# Ground Official

- One ground official per team at every game
- Any one over the age of 18
- Must wear fluorescent coloured vest
- Must not coach
- Cannot act as linesman
- Must not be inside ropes or fence

# Uniforms & Equipment

- Jerseys are for matches only
- Not to be worn at any other time
- Must be returned at end of season
- Alternative strip available at canteen for comp teams only  
(Wash & Returned ASAP)
  - For every game v Carss Park
  - When playing other BNFC teams, the designated home team is to change

# Uniforms & Equipment

- For matches, all jewellery (including glasses, wristbands, necklaces, hairclips) must be removed
- Shin pads must be worn
- Match ball are used for competition games only
- Training bibs are for training & subs in comp
- Bibs will be provided to coaches when uniforms distributed
- The kit must be returned at end of season

# Technical Areas

- All grounds must have technical areas, typically competition only.
- Only one RTO and max 5 subs (who are on match sheet) allowed in technical area
- Subs must wear bibs when in technical area
- RTO may stand, subs must be seated in technical area
- Seating must be bench type, **individual chairs not permitted**



# Playing Up Rules

- Refer to SGFA RTO Handbook or By Laws
- Same age – higher grade only
  - 12B can play in the 12A
- One year up – same or higher grade
  - 12B can play in the 13B or 13A
- Two years (True Age) up – same or one grade lower
  - 12A can play 14A or 14B
- Two teams in same grade cannot swap players
- Girls playing up rules published by SGFA each season



# Referees

- Official referees appointed to all matches
- When no official ref, home team appoints ref over the age of 18.
- Once appointed, person has official authority
- Referee fees (correct amount) as determined by Football NSW must be paid prior to kick off.
- Fees issued at monthly RTO meeting.
- On a red card the player's ID card must be surrendered to the referee at the end of the match.

# Referees

- Respect the referee
- Set a good example for players and parents
- Ref's will make mistakes, **don't argue the call.**
- SGFA is losing ref's due to the abuse from RTOs, players and supporters
- The coaches should thank the referee after the game

# Forfeits

- Comp teams must have 7 eligible players (including the goalkeeper) at start of play
- If short, can organise for other BNFC players to play up
- Forfeits incur a \$110 fine from SGFA
- If forfeiting, you must contact Club Secretary at least 36 hours before the match or a further SGFA match fee fine and double referee fees will apply to your team

# Coach Training

- ONE COACH PER TEAM will be reimbursed for subscription to [www.globalfootballsyste.com](http://www.globalfootballsyste.com)
- Access will be disabled if used from more than 3 IP addresses per month
- Email copy of receipt to BNFC Treasurer
- Joe Holt Coach the Coaches sessions
- Joe Holt squad sessions (non comp)
- Goalkeeper Training (8 week program, Bexley Oval)

# Player Injury

- Injury & accident insurance is covered by the registration fee.
- Cover is provided for injuries from participation in official games, official training sessions, official practice games & **sanctioned other events**
- Organised by Football NSW
- Ask referee to note any injury on match sheet
- Inform Club Secretary of injury within 14 days
- Claim form is available from the Club Secretary

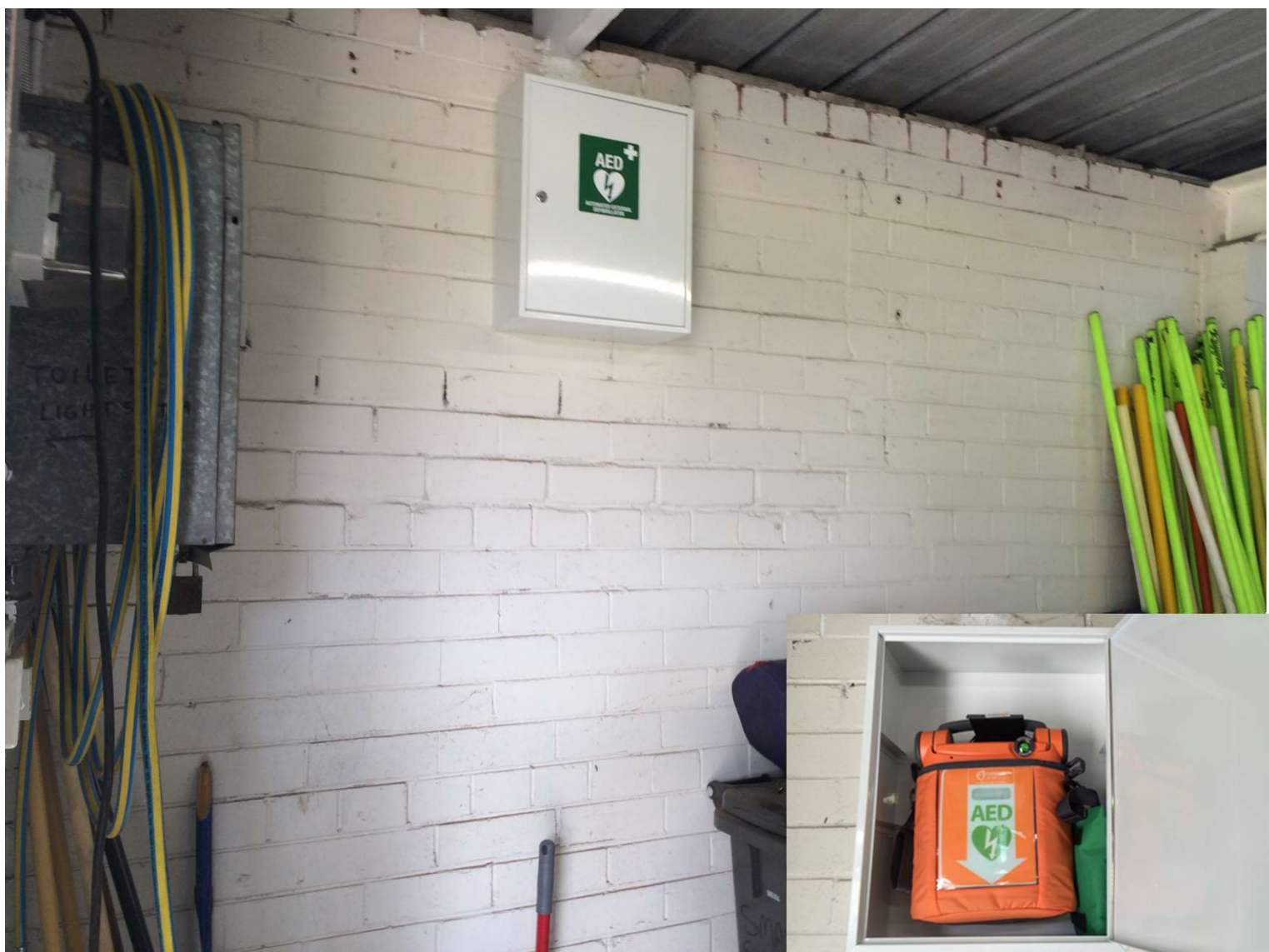
# St George Association

- Check SGFA documents under Club Files
- SGFA By-laws & Competition Rules
- Do not contact the SGFA – all communication must be through BNFC Secretary
- Non competition rules – Aldi MiniRoos

# AED

- Stored in the white medical cabinet in the gear shed
- 3 Keys – on top of cabinet, key safe & canteen
- Watch training video (next meeting)









**Questions?**